



# WISE COUNTY MESSENGER Welcome to Wise 2013 READ IT ONLINE NOW!



- [HOME](#)
- [CLASSIFIEDS](#)
- [ADVERTISING](#)
- [SUBMIT NEWS](#)
- [SUBSCRIBE](#)
- [ABOUT US](#)

Search

## WCMessenger.com WISE COUNTY MESSENGER Online Edition

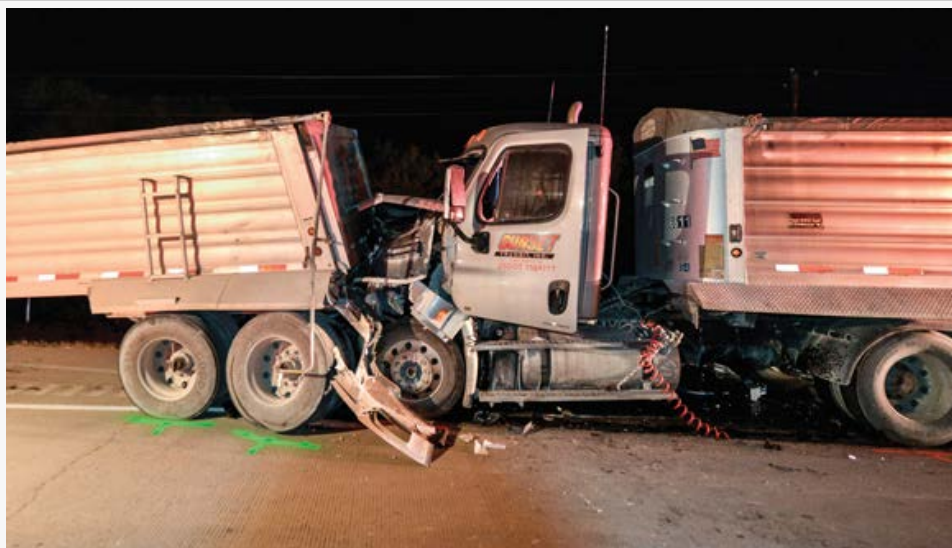
- [UPDATE »](#)
- [NEWS »](#)
- [SPORTS »](#)
- [OBITUARIES](#)
- [OPINION »](#)
- [LIFESTYLE »](#)
- [EDUCATION »](#)
- [PHOTOS/VIDEOS »](#)
- [DIGITAL SUBSCRIBERS »](#)
- [COLUMNS & BLOGS »](#)

### NEWS HEADLINES

## 18-wheeler wreck leaves 1 dead

By Clay Corbett | Published Saturday, August 3, 2013

Two 18-wheelers collided early Friday morning on Texas 114 in southeast Wise County, leaving one man dead and another seriously injured. Kenneth King, 49, of Fort Worth was pronounced dead at the scene after his 18-wheeler rear-ended another 18-wheeler three miles east of Rhome.



FATAL ACCIDENT – Kenneth King, 49, of Fort Worth was killed when his 18-wheeler rear-ended another truck three miles east of Rhome Friday morning. Messenger photo by Joe Duty

Rhame Police Officer Brody Brown said both vehicles were traveling west on 114 about 1:50 a.m. when King's truck rear-ended the other truck, which was moving at a "very slow rate of speed." It was driven by Daniel Asturias, 43, of Irving.

"It was determined the front vehicle was driving well under the speed limit," Brown said. "The rear vehicle was driving the normal speed limit of 60 to 65 mph. There were no signs of braking prior to impact."

After the collision, Asturias' truck jackknifed, and the impact caused the cab to detach from its trailer. The cab came to rest in the ditch on the north side of 114.

Asturias suffered serious injuries and was flown from the scene by air ambulance to John Peter Smith Hospital in Fort Worth. Both drivers were wearing their seat belts.

### Login

Username:

Password:

Remember me

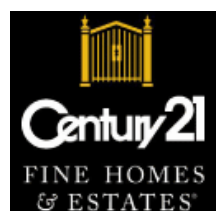
[Recover password](#) | [Create an Account](#)



NEW & IMPROVED



Do you think it's important to have public notices in newspapers?



A mixture of diesel, oil and transmission fluid covered a portion of the highway, causing the closure of the westbound lanes for more than five hours. Texas Department of Transportation reopened the roadway about 7:30 a.m.

In addition to Rhome PD, other responding agencies included Rhome and Newark fire departments, Wise County medics and Texas Department of Public Safety.



---

**Leave a Reply. Note: As of March 24, 2011, all posted comments will include the users full name.**

WCMessenger.com News and Blog Comment Guidelines

You must be logged in to post a comment.

---

**Recent News**

**Recent Business**

House fire claims 3 pets

Teen forced into sex trade

18-wheeler wreck leaves 1 dead

Antique cargo plane takes flight

Study finds contaminants in water near gas wells

Meyers appointed to council vacancy

Runway extension, park rules on deck at council meeting

District rounding out budget

EDC director resigns, returns to previous job

Heaberlin to discuss latest novel

**MORE NEWS HEADLINES...**