

ADVERTISEMENT

See Wes Bonner or Jerry Reid at Riverside Chevy!





**CHEVY CRUZE**  
42 MPG - Best in Class

SUBSCRIPTION CENTER: [Manage Account](#) | [Sign Up](#)

SITE SEARCH

WEB SEARCH BY [Google™](#)

[Health Connections](#) · [Business Breaks](#) · [41212 Deals](#) · [Job Link](#) · [Obituaries](#) · [Coupon Bug](#)



Montgomery 12:00 am 3:00 am

**68°**

Feels Like: 68° 62° 62°



Interactive Radar

[7-Day Forecast](#)

[Doppler 12](#)

HOME LOCAL WEATHER SPORTS HEALTH LIFESTYLE PROGRAMMING ABOUT US

ADVERTISEMENT

[f Recommend](#) [7](#) [t](#) [M](#) [v](#) [e](#) [+](#) 3

## Lanes on I-85 all clear after early morning accident

Posted: Nov 06, 2013 5:58 AM CST  
Updated: Nov 06, 2013 8:34 AM CST

By Rachel Jinright - [email](#)

MONTGOMERY, AL (WSFA) - All lanes are now open on I-85 north and southbound lanes.

Police closed both the inside southbound lane and the middle northbound lane of I-85 after the accident early this morning.

Officials say the accident occurred after an 18-wheeler ran off the roadway.

Police and emergency vehicles are now on the scene attempting to clean the debris.

This was a single-vehicle accident with no injuries.

WSFA 12 News will continue to bring you the latest details.

Copyright 2013 [WSFA 12 News](#). All rights reserved.

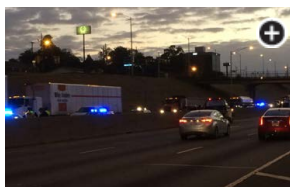
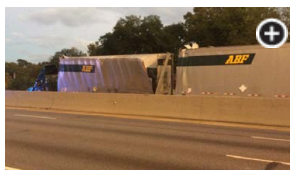
### WE RECOMMEND

- Victim killed in Wednesday I-85 crash identified
- Experts debate 'safe' dose of radiation
- Pregnant wife stabbed while on FaceTime with overseas husband
- Body found in SUV last night
- Woman charged with sexually abusing 2 children

### FROM AROUND THE WEB

- The 10 Worst Hotels and Motels in America (*The Fiscal Times*)
- 5 Great Part-Time Jobs for Retirees (*AARP*)
- 5 Dog Breeds That Are Sadly Losing Popularity (*Vetstreet*)
- Easiest Schools for an Online Degree (*Education Portal*)
- Oregon Ducks' New Training Facility Will Blow Your Mind (*STACK*)

Recommended by 



MORE NEWS [more>>](#)

**Your Week in Music:**  
How many awards shows does country music need? Hint: A lot

**Twitter sets IPO price at \$26, will raise \$1.8B**

**Sebelius takes GOP criticism over "Obamacare"**

**Michael Jordan's home can be yours ... for a price**

**Wal-Mart blames price errors on technical**



YOU MAY LIKE

by Taboola



**Crimson Tide football player arrested**



**Pedestrian fighting for life after being hit in Montgomery**



**Crimestoppers: Authorities on the hunt for woman wanted for**



**Kim Kardashian's Maternity Style: Love It or Hate It?**  
Parent Media



**Crimestoppers: Montgomery Police looking for thieves who've been**

- 
- Comments
- 



Facebook social plugin

ADVERTISEMENT

## HOME

[Write it Down!](#)  
[What's On TV](#)  
[Entertainment](#)  
[Editorials](#)  
[Education](#)  
[Food](#)  
[WSFA 12 News Jobs](#)  
[America Now](#)  
[Sunbelt Ag News](#)

## NEWS

[Today In Alabama](#)  
[Alabama Live!](#)  
[Inside Ala.'s  
Legislature](#)  
[Consumer](#)  
[Politics / Government](#)  
[CrimeStoppers](#)

## WEATHER

[Severe Weather](#)  
[Satellite / Radar Loop  
Maps](#)  
[Airport Delays Maps](#)  
[Weather Headlines](#)  
[Doppler 12  
StormVision](#)  
[Interactive Radar](#)  
[ALFA SkyVision Cams](#)

## SPORTS

[Sports Event Webcasts](#)  
[Alabama Sports  
Headlines](#)  
[Baseball](#)  
[Other Sports](#)  
[Football](#)  
[NBCSports.com](#)  
[NBA/WNBA](#)

## VIDEO

[Video](#)

## ABOUT US

[Meet the News Team](#)  
[Email Us](#)  
[History of WSFA-TV](#)  
[Advertise on WSFA](#)  
  
[FCC Public File](#)  
[publicfile@wsfa.com](mailto:publicfile@wsfa.com)  
[334-613-8256](tel:334-613-8256)  
[EEO Report](#)  
[Closed Captioning](#)



All content © Copyright 2000 - 2013 WorldNow and WSFA, a **Raycom Media Station**.  
All Rights Reserved. For more information on this site, please read our [Privacy Policy](#) and [Terms of Service](#).